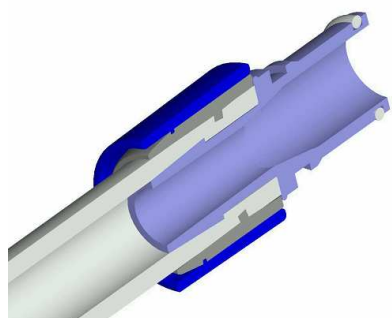


BarbLock™



- BarbLock Sleeve
- BarbLock Collet
- Tubing
- Barbed Fitting

Distributed by

Applied Critical Fluids GmbH



Industriestrasse 53
D-68169 Mannheim
Germany
Tel. 0049 (0)621/3098093-0
Fax. 0049 (0)621/3098093-99
More Info: www.acftec.de
E-Mail: info@acftec.de

Compatibility excellent for:

- Acids
- Bases
- Salts
- Alcohols
- Petroleum
- Organic Solvents
- Animal/Synthetic/Vegetable Oils
- Oil/Water Emulsions

Stock Sizes & Compatibility						Recommended Coupling and Tubing		Recommend. Assembly Tool:
Catalogue No.	Hose/Tubing OD	Hose/Tubing mm	Hose/Tubing ID	Barbed Fitting	Medical Couplings, examples	Silicone Tubing		
125 Series								
135125	1/4"	6,4	1/8"	3,0	1/8"	3,0	I-SA P60 32-16-64	135905
250 Series								
135250	3/8"	9,5	1/4"	6,4	1/4"	6,4	MPC170-04T-;MPC220-04T- I-SA P60 64-16-96	135910
135251	7/16"	11,0	1/4"	6,4	1/4"	6,4	MPC170-04T-;MPC220-04T- I-SA P60 64-24-112	135910
135252	1/2"	13,0	1/4"	6,4	1/4"	6,4	MPC170-04T-;MPC220-04T- I-SA P60 64-32-127	135915
375 Series								
135375	5/8"	16,0	3/8"	9,5	3/8"	9,5	MPC170-06T-;MPC220-064T-; MPX 226- I-SA P60 95-32-159	135930
500 Series								
135500	3/4"	19,0	1/2"	13,0	1/2"	13,0		135960
135501	3/4"	19,0	1/2"	13,0	1/2"	13,0	MPX178-; MPX228- I-SA P60 127-32-191	135960
625 Series								
135625	7/8"	22,0	5/8"	16,0	5/8"	16,0	I-SA P60 159-32-223	
750 Series								
Custom Availability: Colors / Brackets / Sizes								Universal removal tool: 135990

BarbLock™

Physical Properties		
Mechanical	Nominal Values	Test
Tensile Strength @ Yield	4,800 psi	ASTM D638 ³
Tensile Strength @ Break	2,000 psi	ASTM D638 ³
Tensile Strength @ Yld	18 %	ASTM D638 ³
Tensile Strength @ Brk	46 %	ASTM D638 ³
Flexural Modulus	145,000 psi	ASTM D790 ³
Impact	Nominal Values	Test
Notched Izod Impact (73° F)	1.10 ft-lb/in	ASTM D256
Unnotched Izod Impact (73° F)	No Break ft-lb/in	ASTM D256
Unnotched Izod Impact (0.0° F)	3.10 ft-lb/in	ASTM D256
Gander Impact (73° F, 0.1250 in)	153 in-lb	ASTM D3029
Hardness	Nominal Values	Test
Rockwell Hardness (R-Scale)	93.0	ASTM D785
Thermal	Nominal Values	Test
DTUL @ 66 psi—Unannealed	172°	ASTM D1003
Optical	Nominal Values	Test
Haze	9,0 %	ASTM D1003

Single Retainer	Inherent Leak Path	360 Compression behind the barb	360 Compression over barb ridge	Integral component design	Engineered Composite Construction
BarbLock™	No	Yes	Yes	Yes	Yes
Cable Ties	Yes	No	No	No	No
Hose Clamps	Yes	No	No	No	No
Ear Clamps	Yes	No	No	No	No

BarbLock has been tested to 700 PSI/BarbLock is engineered for each combination of tubing and fitting



Distributed by

Applied Critical Fluids GmbH



Industriestrasse 53
D-68169 Mannheim
Germany

Tel. 0049 (0)621/3098093-0
Fax. 0049 (0)621/3098093-99
More Info: www.acftec.de
E-Mail: info@acftec.de